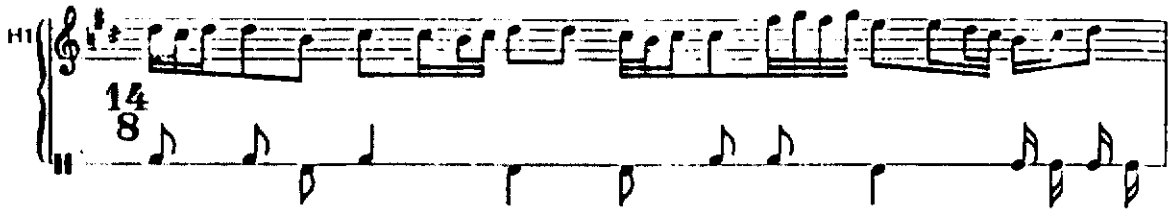
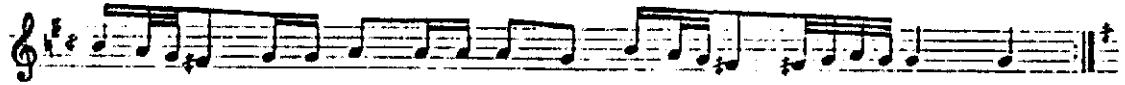


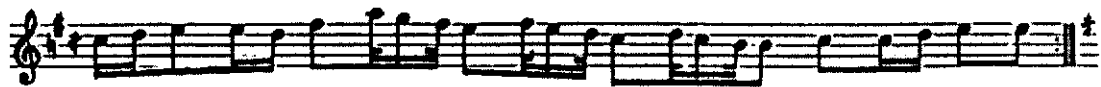
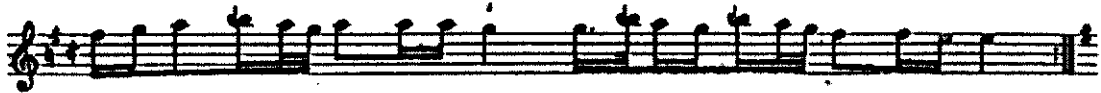
174



175



See notes to 295. The title *hûrî* means 'houri'.





1) After the *terkib-i intikâl* comes the instruction *ba'dehu mülâzime* ('followed by the *mülâzime*') making it quite clear that the *terkib-i intikâl* is a reprise of M b transitional between H3 b and a reprise of M as a whole, and not an indication that H3 is to be followed by a truncated form of the *mülâzime* (M b + c).

3) Popescu-Judetiz 13 (333-4). 1 = ♩. Time signature 28 : 4.

H1 1: 10 gg/♯g.

M a 1: 11 ee (♩), 2: 3 dc.

H2 a 1: 10 e.

H2 b 1: 13 ff, 14 e, 2: 4 e.

H3 a: 1 GAGA.

H3 b: 2+ff ♯. B♯ is rendered by B♯.

terkib-i intikâl: stops with the original.

*Burada 35/113-42/120 (and thence Popescu-Judetiz 25 (366-9)).

(One cycle of the original becomes two 14 : 4 cycles; H1>H1, M>H2, H2>H3, H3>H4.)